

Celebrity Millennium

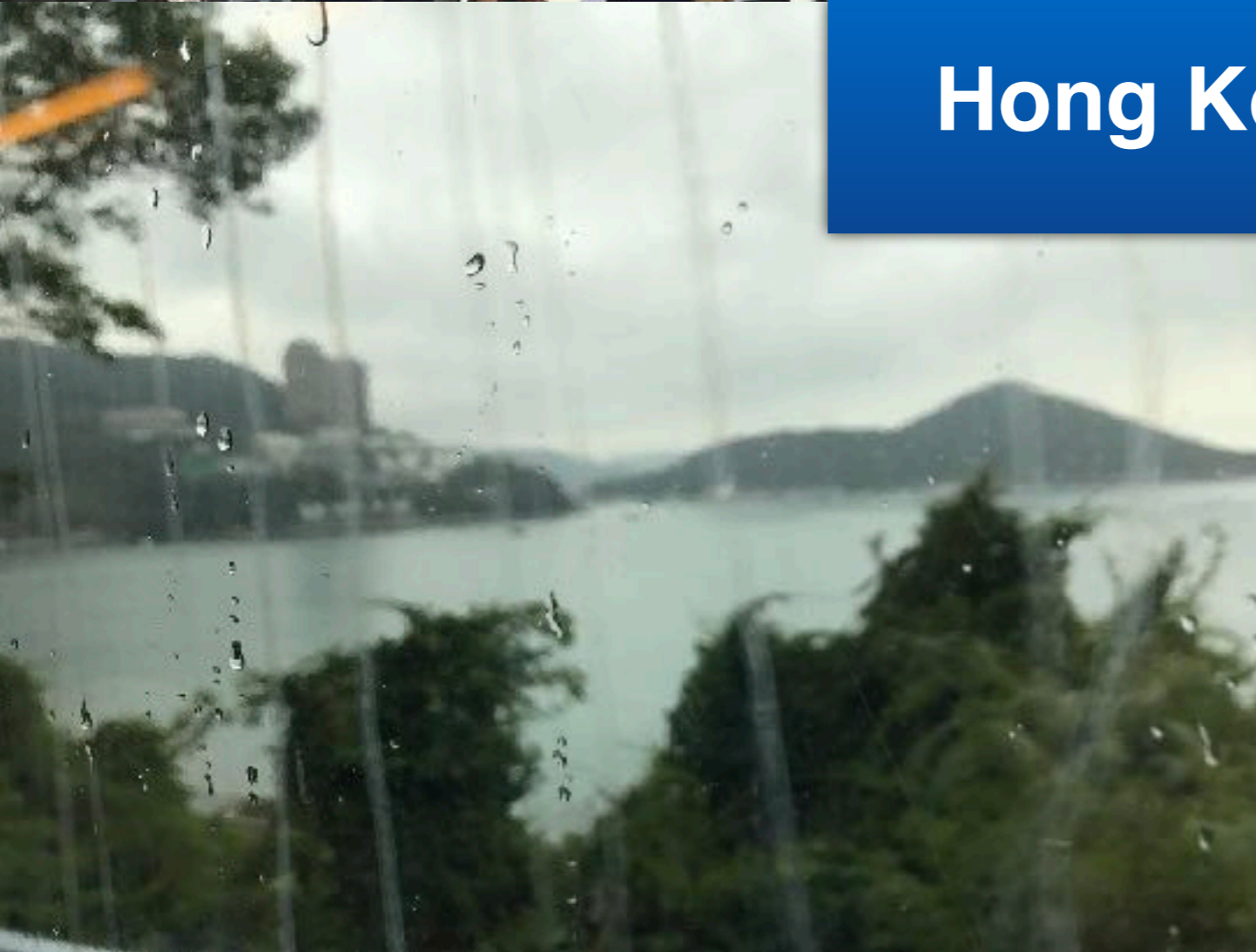
Bangkok to Singapore cruise in January 2018



The Ship



Hong Kong



Hong Kong



HANOI (HALONG BAY), VIETNAM

THE VERY BEST OF HANOI / 13 Hrs - \$146

Visit the Imperial Citadel of Thanh Long, inscribed on the World Heritage List by UNESCO's World Heritage Committee. Learn about Vietnam, most of the country's history is about war and fighting for independence. Admire a display of military-related artifacts. Its exhibition dated back to as early as Hung Vuong Era, which is considered the start of Vietnam as a country. The first thousand year being colonized by Chinese is elaborately depicted, as well as the century struggle against French colony. Established by the French colonial government in 1896, Hoa Lo Prison was originally used to detain political prisoners and formed part of a Northern network of 'unjust and cruel prisons'. Finally, you will have a photo stop at the famous One Pillar Pagoda and a chance to explore the Old Quarter onboard a rickshaw.

HANOI (HALONG BAY), VIETNAM

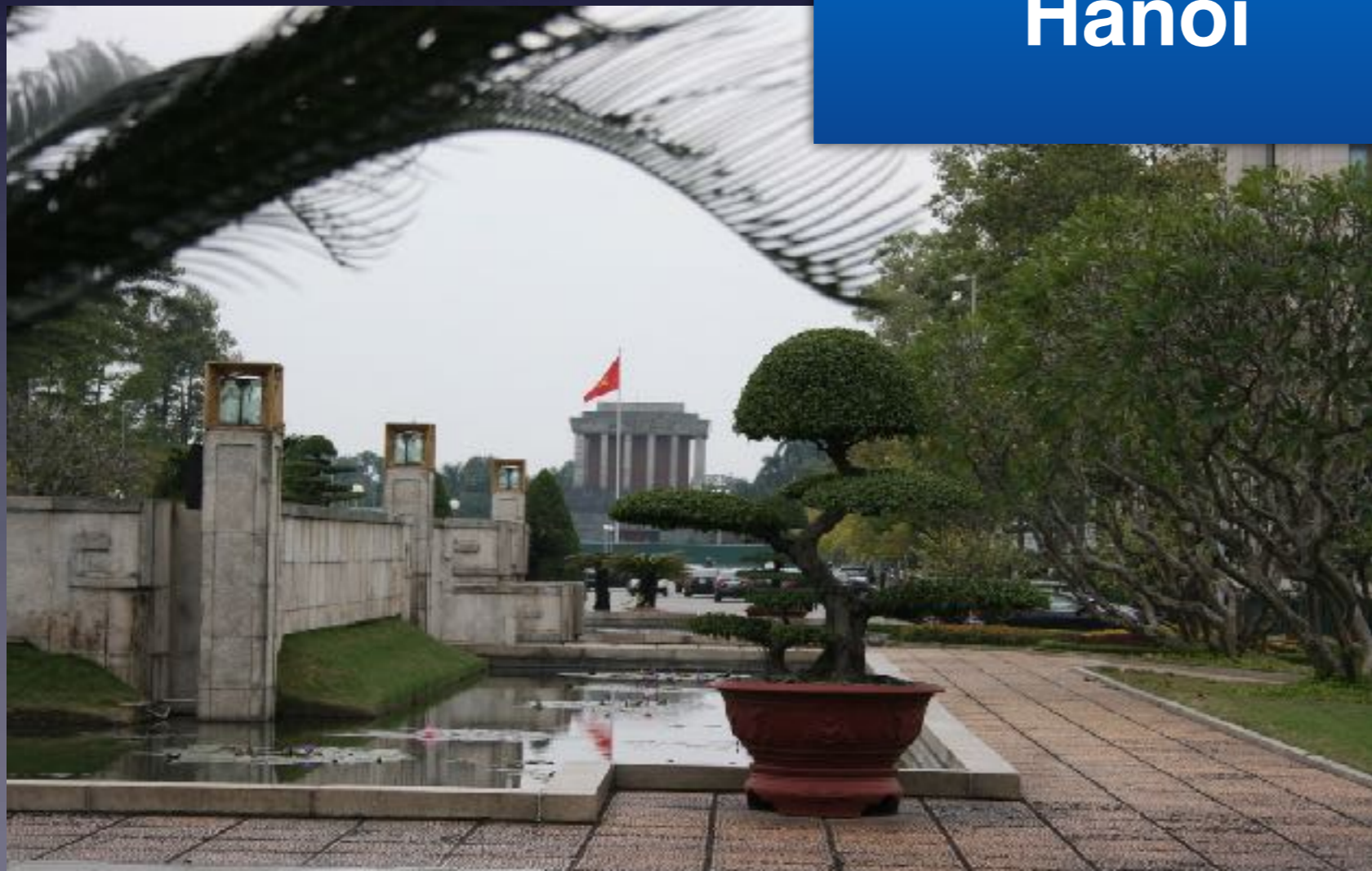
Extended HALONG BAY BY BOAT, SAMPAN RIDE AND CAVE / 5 Hrs - \$108

Located in the Gulf of Tonkin, Ha Long Bay is one of the world's outstanding natural wonders, resembling a geographic work of art with thousands of limestone islets soaring dramatically from the clear emerald waters. This densely concentrated zone of karst islands, world famous for its spectacular scenery of grottoes and caves, is a UNESCO World Heritage Site. On this tour, witness the tranquil beauty and breathtaking scenery from the decks of a traditional junk, complete with bat-winged sails. Gliding through the gin-clear waters of the bay, absorb one of the most magnificent natural splendors of the Far East. See tiny islands dotted with rock arches, sheer cliffs, innumerable white sand beaches and peaceful coves. This tour will take you the furthest in. Last but not least, you will have a chance to join the sampan ride through this stunning cave.

434



Hanoi





Hanoi





Hanoi - Ha Long Bay





Hanoi - Ha Long Bay



Hanoi - Ha Long Bay



HUE / DANANG (CHAN MAY), VIETNAM

HOI AN RIVER CRUISE, MARBLE MOUNTAIN & SCENIC DRIVE / 8.5 Hrs - \$108

✱ 8.15
10/8.30

Begin your tour by walking through the Thanh Ha Pottery Village to the local boat station for cruising on the Thu Bon River to Hoi An Ancient Town – In 1999, UNESCO formally recognizes Hoi An as a World Heritage Site. Stroll through the town past the Japanese bridge, Ancient House, Chinese Temple, Hoi An Museum and local Market. After lunch head directly back to Da Nang. Visit Marble Mountain, a cluster of five hills made from limestone for a beautiful view of the city. It's also a well-known pilgrimage site with peaks, caves, tunnels and temples. On the way back, you will be driving the Hai Van Scenic Pass: a 19 kilometers of roadway that winds up and over a fortress of mountains, connecting Da Nang with the town of Lang Co.

Da Nang



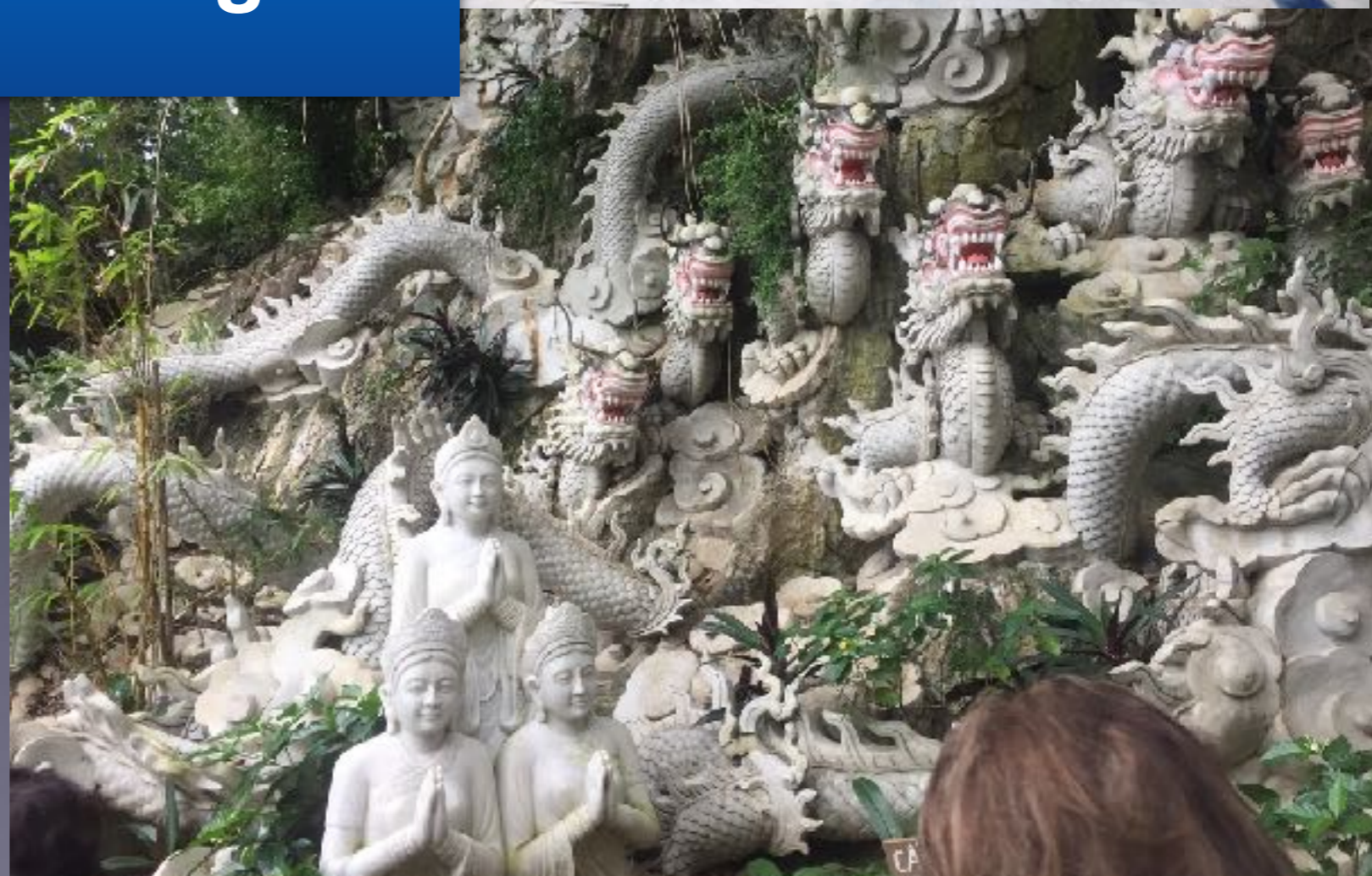


Da Nang





Da Nang



HO CHI MINH (PHU MY), VIETNAM

SAIGON HIGHLIGHTS & CU CHI TUNNELS W LUNCH / 10.5 Hrs - \$114

Join a scenic journey through lush countryside into the Cu Chi District. At the tunnels, you will be astounded by the ingenuity and resilience of the Vietnamese people. The network extends over 120 miles and includes innumerable trapdoors, a smokeless kitchen, sleeping areas, hospitals and schools. 16,000 people lived in these tunnels, which measured just 31 inches wide and five feet high, with air holes at every 100 feet. After lunch, you will be joining a scenic journey to Ho Chi Minh, passing by the Notre Dame Cathedral and Central Post Office where you can take some photos outside. Finally, enjoy your free time for strolling around and shopping at the Ben Thanh market - the most crowded and popular area of Ho Chi Minh City, which caters to both the daily needs of the local people with local products as well as souvenirs.

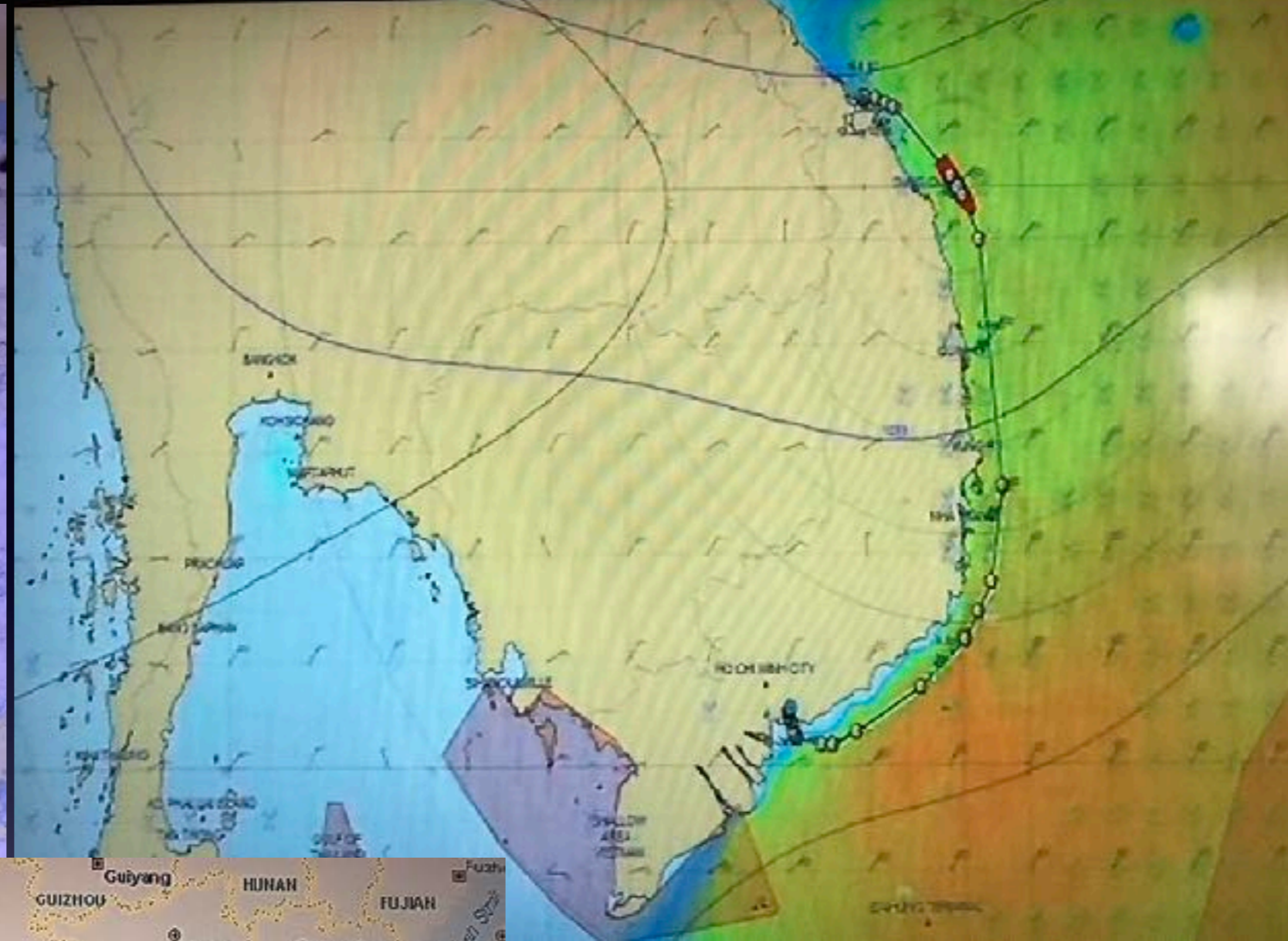
HO CHI MINH (PHU MY), VIETNAM

CAN GIO MANGROVE FORESTS & PANORAMIC SAIGON / 9.5 Hrs - \$184

After a panoramic tour of Saigon, race across the Mekong Delta on a speedboat tour that leads to the mysterious jungle canals of the Can Gio Mangrove Forest. This UNESCO Biosphere Reserve is a wonderland of nature and wildlife. As you glide through the lush landscape, keep searching for monkeys, gibbons and other creatures of the jungle. Along the way, you'll stop at a local village and a riverside market for a glimpse of life amid this unforgiving territory, and visit a crocodile reserve for the unforgettable chance to feed these prehistoric predators. Transfer to a small rowboat for a slow paddle out into the legendary Giant Bat Lagoon before continuing to the Vam Sat Eco Park to explore this unique ecosystem on foot. All of this, plus, savor a traditional Vietnamese lunch at a charming restaurant along the way.

Saigon / Ho Chi Minh





Saigon / Ho Chi Minh



Từ beam dụn ếp chế tạo thành vũ khí để chiến đấu.
Manufacturing weapons from useless beams.



Xây dựng hầm chông bảo vệ xóm làng.
Constructing bamboo-spike traps to protect villages and hamlets.



Saigon / Ho Chi Minh

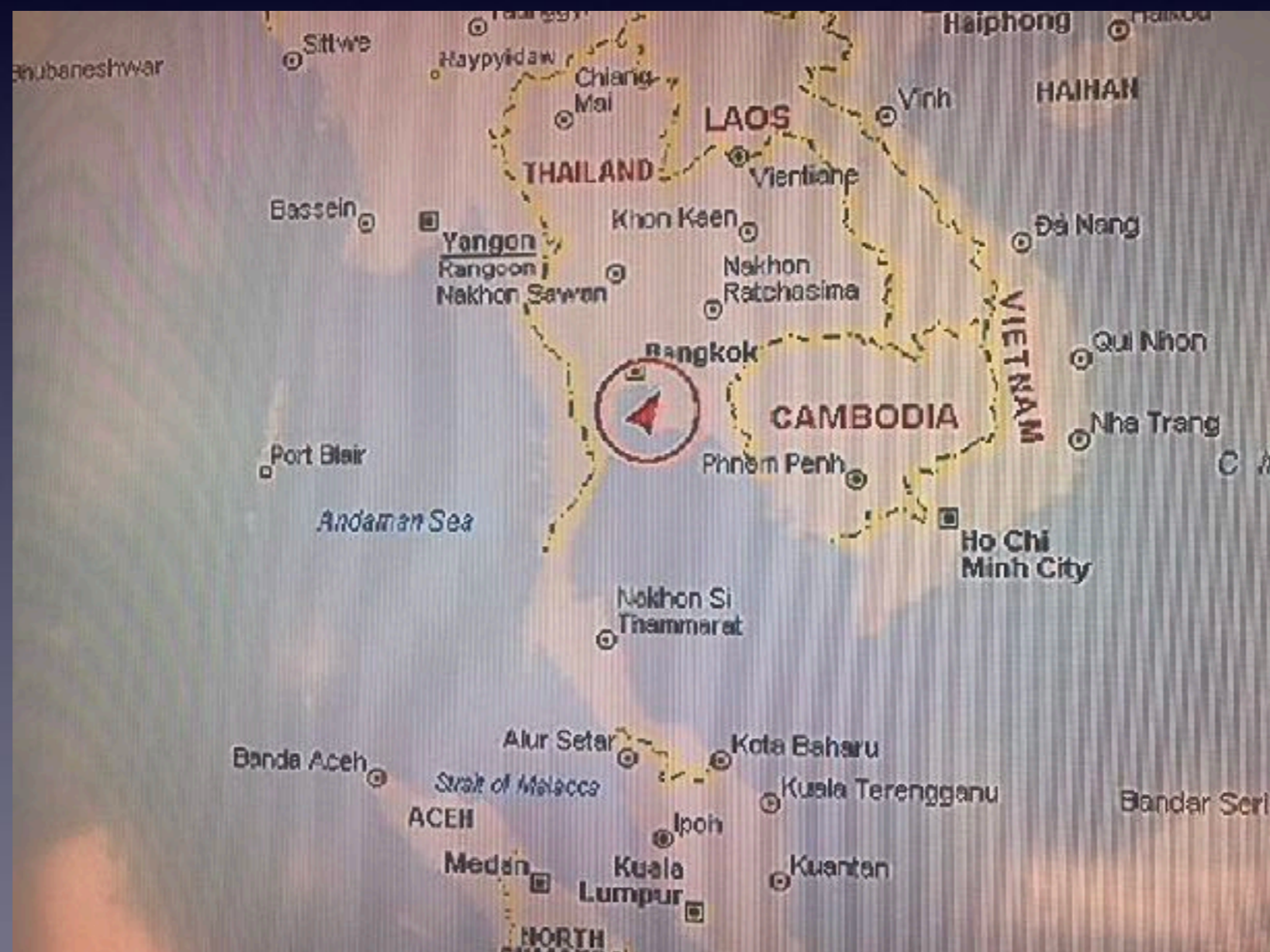


Saigon / Ho Chi Minh

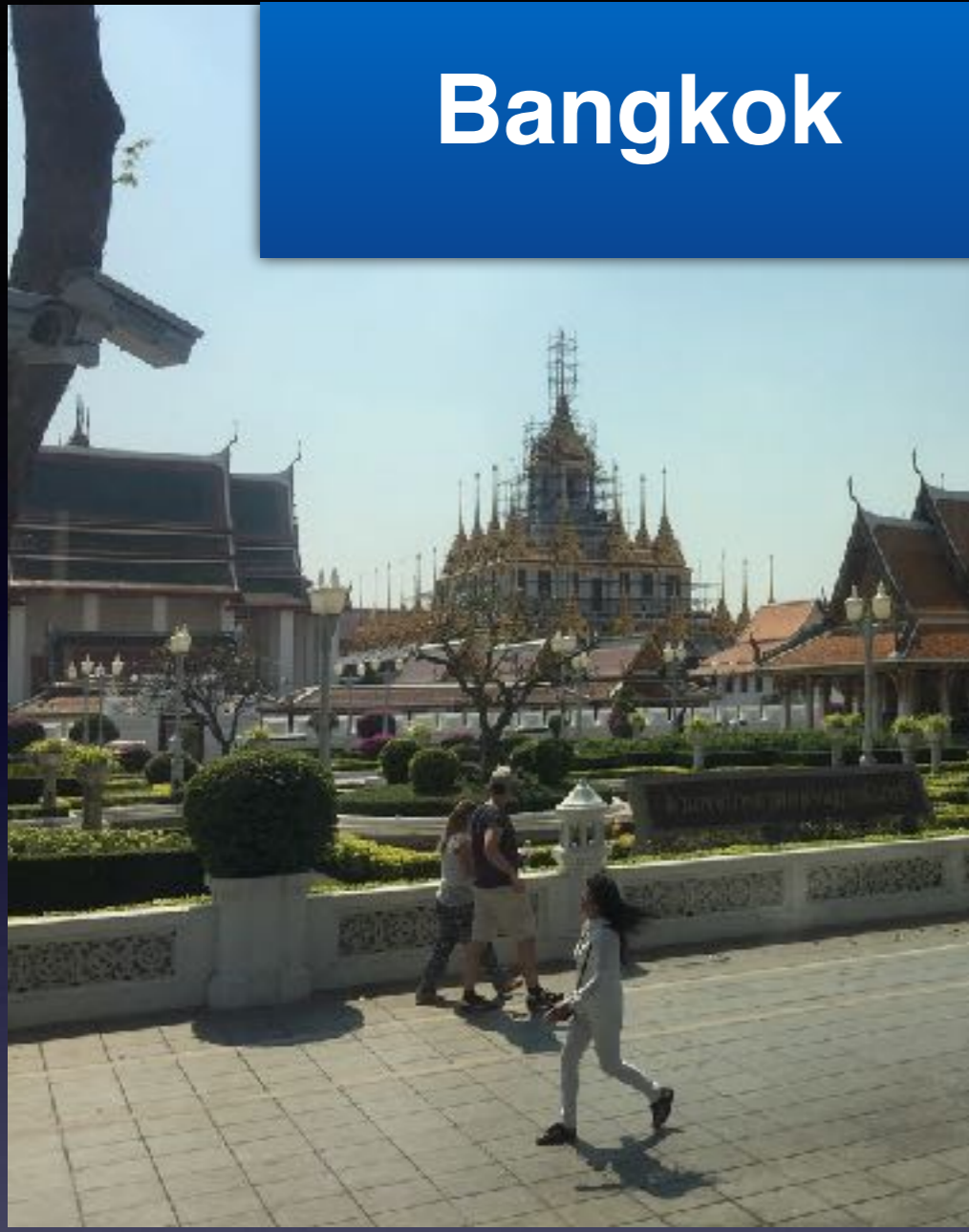
BANGKOK/LAEMCHABANG, THAILAND

BEST OF PATTAYA / 8.5 Hrs - \$98

Begin your day with a panoramic drive thru Wat Yannasankwararam, enclosed in a huge 145 acre complex, surrounded by clean gardens, massive lakes, and several different architectural styles of buildings. Discover Sala Viharn Sien, followed by a visit to Pattaya Viewpoint & Big Buddha Statue. Afterwards, enjoy 2 hours of free time to shop and explore on your own before heading to the 'Sanctuary of Truth'. Sanctuary of the Truth Wooden Pavilion consists of the intricate and detailed wooden sculptures reflecting the Ancient Vision of Earth, ancient Knowledge, and Eastern Philosophy.



Bangkok





Bangkok



Bangkok

Perpetual Calendar
COMMON YEARS, 1800 TO 2050

										MONTHS																																																	
										J	F	M	A	M	J	J	A	S	O	N	D																																						
1801	1829	1857	1885	1914	1942	1970	1998	2026																																																			
1807	1835	1863	1891	1925	1953	1981	2009	2037	4	7	7	3	5	1	3	6	2	4	7	2																																							
1810	1846	1874	1903	1931	1959	1987	2015	2043																																																			
1802	1830	1858	1886	1915	1943	1971	1999	2027	5	1	1	4	6	2	4	7	3	5	1	3																																							
1813	1841	1869	1897	1926	1954	1982	2010	2038																																																			
1819	1847	1875	1909	1937	1965	1993	2021	2049	6	2	2	5	7	3	5	1	4	6	2	4																																							
1803	1831	1859	1887	1921	1949	1977	2005	2033																																																			
1814	1842	1870	1898	1927	1955	1983	2011	2039																																																			
1825	1853	1881	1910	1938	1966	1994	2022	2050																																																			
1805	1833	1861	1889	1907	1935	1963	1991	2019	2047	2	5	5	1	3	6	1	4	7	2	5	7																																						
1811	1839	1867	1895	1918	1946	1974	2002	2030																																																			
1822	1850	1878	1901	1929	1957	1985	2013	2041																																																			
1800	1823	1851	1879	1913	1941	1969	1997	2025	3	6	6	2	4	7	2	5	1	3	6	1																																							
1806	1834	1862	1890	1919	1947	1975	2003	2031																																																			
1817	1845	1873	1902	1930	1958	1986	2014	2042																																																			
1809	1837	1865	1893	1911	1939	1967	1995	2023	7	3	3	6	1	4	6	2	5	7	3	5																																							
1815	1843	1871	1899	1922	1950	1978	2006	2034																																																			
1826	1854	1882	1905	1933	1961	1989	2017	2045																																																			
1810	1838	1866	1894	1917	1945	1973	2001	2029	1	4	4	7	2	5	7	3	6	1	4	6																																							
1821	1849	1877	1909	1923	1951	1979	2007	2035																																																			
1827	1855	1883	1906	1934	1962	1990	2018	2046																																																			
LEAP YEAR, 1804 TO 2048										29																																																	
1804	1832	1860	1888		1928	1956	1984	2012	2040	7	3	4	7	2	5	7	3	6	1	4	6																																						
1808	1836	1864	1892	1904	1932	1960	1988	2016	2044	5	1	2	5	7	3	5	1	4	6	2	4																																						
1813	1840	1868	1896	1908	1936	1964	1992	2020	2048	3	6	7	3	5	1	3	6	2	4	7	2																																						
1820	1848	1876		1912	1940	1968	1996	2024		1	4	5	1	3	6	1	4	7	2	5	7																																						
1824	1852	1880		1926	1944	1972	2000	2028		6	2	3	6	1	4	6	2	5	7	3	5																																						
1828	1856	1884		1924	1948	1976	2004	2032		4	7	1	4	6	2	4	7	3	5	1	3																																						
				1924	1952	1980	2008	2036		2	5	6	2	4	7	2	5	1	3	6	1																																						
MONDAY												CALENDAR 1												CALENDAR 2												CALENDAR 3												CALENDAR 4											
TUESDAY												1 8 15 22 29												7 14 21 28												6 13 20 27												5 12 19 26											
WEDNESDAY												2 9 16 23 30												1 8 15 22 29												7 14 21 28												6 13 20 27											
THURSDAY												3 10 17 24 31												2 9 16 23 30												1 8 15 22 29												7 14 21 28											
FRIDAY												4 11 18 25												3 10 17 24 31												2 9 16 23 30												1 8 15 22 29											
SATURDAY												5 12 19 26												4 11 18 25												3 10 17 24 31												2 9 16 23 30											
SUNDAY												6 13 20 27												5 12 19 26												4 11 18 25												3 10 17 24 31											
												7 14 21 28												6 13 20 27												5 12 19 26												4 11 18 25											
MONDAY												4 11 18 25												3 10 17 24 31												2 9 16 23 30												1 8 15 22 29											
TUESDAY												5 12 19 26												4 11 18 25												3 10 17 24 31												2 9 16 23 30											
WEDNESDAY												6 13 20 27												5 12 19 26												4 11 18 25												3 10 17 24 31											
THURSDAY												7 14 21 28												6 13 20 27												5 12 19 26												4 11 18 25											
FRIDAY												1 8 15 22 29												7 14 21 28												6 13 20 27												5 12 19 26											
SATURDAY												2 9 16 23 30												1 8 15 22 29												7 14 21 28												6 13 20 27											
SUNDAY												3 10 17 24 31												2 9 16 23 30												1 8 15 22 29												7 14 21 28											



Bangkok





Bangkok Pattaya





Singapore





Singapore

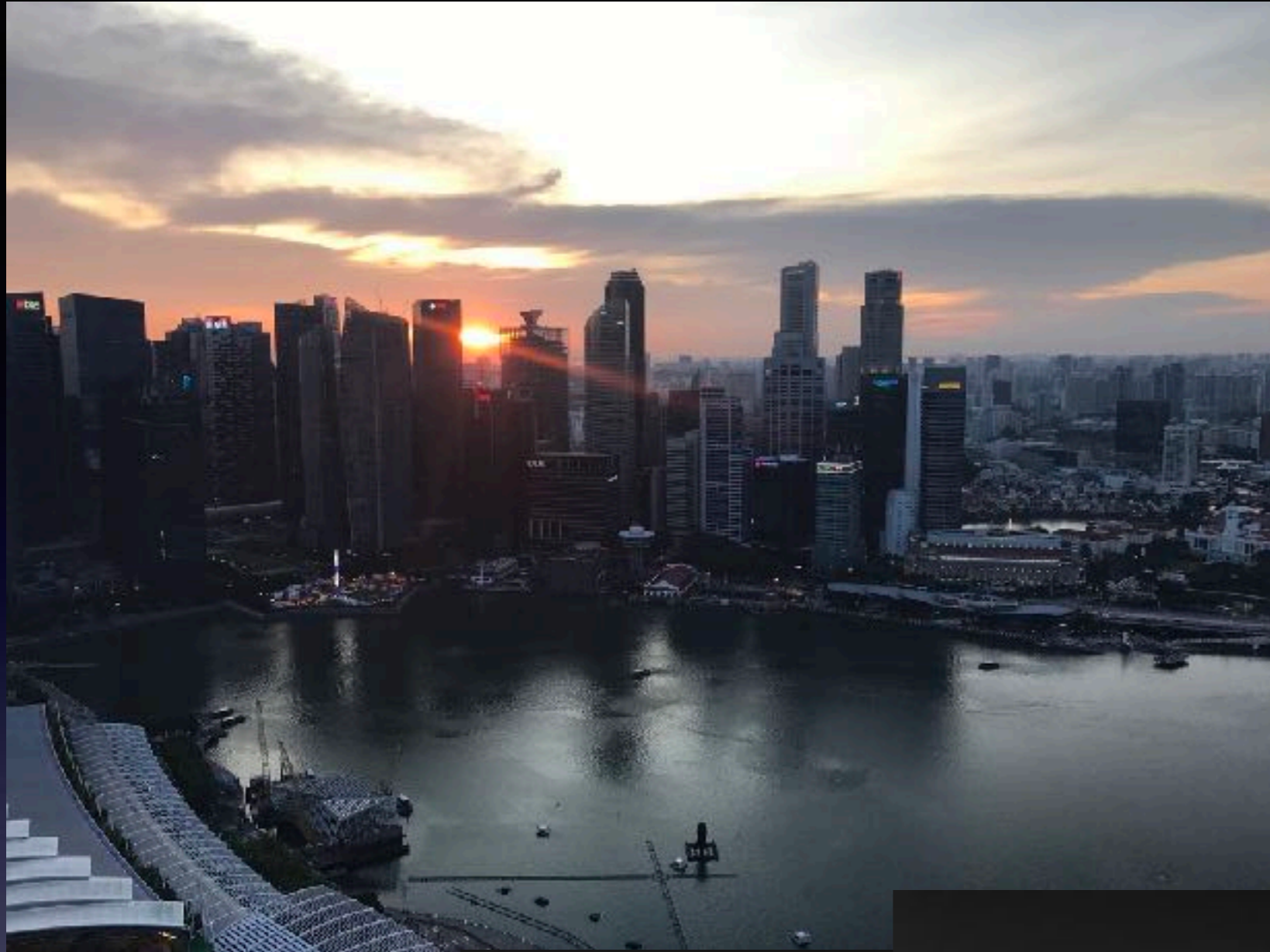


Singapore



Singapore





Singapore

